

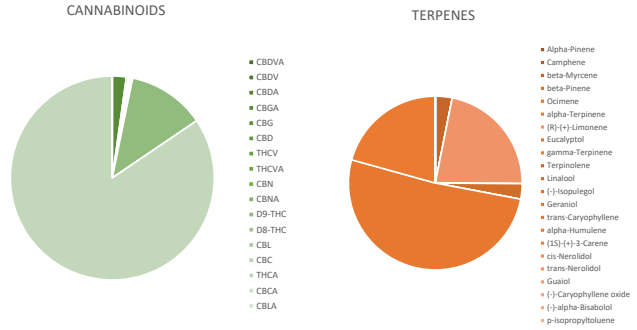
Specimen #: 0530-530.H

Cherry Payton

Client Name & License Harmony Secaucus MC000203
Sample Type Flower
Licensee Contact Adam Johnstone
Licensee Address Secaucus, NJ 07094
Sample Weight 7.39g
Total Batch Weight 780g
Customer Lot # S1.CPN.20230530.H
Metric ID 168056219 MCH0509
Parent Pkg ID S1.CPN.20230530.H
Sampled By & Date 01SEP2023 BH
Date Received & Tested 9/1/2023

SUMMARY

Water Activity	PASSED	0.5792	Heavy Metals	PASSED
Moisture	PASSED	13.03%	Mycotoxins	PASSED
Pesticides	PASSED		Microbials	PASSED
Foreign Material	PASSED			



CANNABINOIDS - TM 111				23.46%	TOTAL
Analyte	LOQ	Mass	Mass		
		%	mg/g		
CBDVA	0.01	ND	0.00		
CBDV	0.01	ND	0.00		
CBDA	0.01	ND	0.00		
CBGA	0.01	0.52	5.19		
CBG	0.01	0.07	0.72		
CBD	0.01	ND	0.00		
THCV	0.01	ND	0.00		
THCVA	0.01	0.06	0.56		
CBN	0.01	0.05	0.47		
CBNA	0.01	0.06	0.62		
D9-THC	0.01	2.89	28.87	█	
D8-THC	0.01	ND	0.00		
CBL	0.01	ND	0.00		
CBC	0.01	ND	0.00		
THCA	0.01	19.82	198.22	█	
CBCA	0.01	ND	0.00		
CBLA	0.01	ND	0.00		

TERPENES - TM 102				1.286%	TOTAL
Analyte	LOQ	Mass	Mass		
		%	mg/g		
Alpha-Pinene	0.0125	ND	0.00		
Camphene	0.0125	ND	0.00		
beta-Myrcene	0.0125	0.040	0.40		
beta-Pinene	0.0125	ND	0.00		
Ocimene	0.0125	ND	0.00		
alpha-Terpinene	0.0125	ND	0.00		
(R)-(+)-Limonene	0.0125	0.283	2.83	█	
Eucalyptol	0.0125	ND	0.00		
gamma-Terpinene	0.0125	ND	0.00		
Terpinolene	0.0125	ND	0.00		
Linalool	0.0125	0.037	0.37		
(-)-Isopulegol	0.0125	ND	0.00		
Geraniol	0.0125	ND	0.00		
trans-Caryophyllene	0.0125	0.660	6.60	█	
alpha-Humulene	0.0125	0.266	2.66	█	
(1S)-(+)-3-Carene	0.0125	ND	0.00		
cis-Nerolidol	0.0125	ND	0.00		
trans-Nerolidol	0.0125	ND	0.00		
Guaiol	0.0125	ND	0.00		
(-)-Caryophyllene oxide	0.0125	ND	0.00		
(-)-alpha-Bisabolol	0.0125	ND	0.00		
p-isopropyltoluene	0.0125	ND	0.00		

HEAVY METALS - TM 104

Analyte	Result	LOQ	Action Limit	UOM
Arsenic	ND	0.001	0.4	ppm
Cadmium	0.00	0.001	0.4	ppm
Chromium	0.03	0.001	0.6	ppm
Lead	0.02	0.001	1	ppm
Mercury	0.03	0.001	0.2	ppm

MICROBIALS - TM 101 & 112

Analyte	Result	LOQ	Action Limit	UOM
Total Aerobic	4,023	N/A	100,000	CFU/g
Total Yeast and Mold	0	N/A	10,000	CFU/g
E. Coli	Neg	N/A	0	CFU/g
Salmonella	Neg	N/A	0	CFU/g

MYCOTOXINS - TM 100

Analyte	Result	LOQ	Action Limit	UOM
Aflatoxin B1	ND	1	20	ppb
Aflatoxin B2	ND	1	20	ppb
Aflatoxin G1	ND	1	20	ppb
Aflatoxin G2	ND	1	20	ppb
Ochratoxin A	ND	2	20	ppb

PESTICIDES (in ppm) - TM 100

Analyte	Result	LOQ	Action Limit	Analyte	Result	LOQ	Action Limit	Analyte	Result	LOQ	Action Limit
Abamectin	ND	0.010	0.5	Dimethoate	ND	0.010	0.2	Naled	ND	0.010	0.5
Acetamiprid	ND	0.010	0.2	Ethephon	ND	0.050	1.0	Oxamyl	ND	0.010	1.0
Aldicarb	ND	0.010	0.4	Etoxazole	ND	0.010	0.2	Paclbutrazol	ND	0.010	0.4
Ancymidol	ND	0.010	0.2	Fenpyroximate	ND	0.010	0.5	Permethrin, cis	ND	0.010	0.5
Azoxystrobin	ND	0.010	0.2	Fipronil	ND	0.010	0.4	Permethrin, trans	ND	0.010	0.5
Bifenazate	ND	0.010	0.2	Flonicamid	ND	0.010	1.0	Phosmet	ND	0.010	0.2
Bifenthrin	ND	0.010	0.2	Fludioxonil	ND	0.010	0.4	Piperonyl butoxide	ND	0.010	1.0
Boscalid	ND	0.010	0.4	Flurprimidol	ND	0.010	0.2	Propiconazole	ND	0.010	0.4
Carbaryl	ND	0.010	0.2	Hexythiazox	ND	0.010	1.0	Pyrethrins	ND	0.004	1.0
Carbofuran	ND	0.010	0.2	Imazalil	ND	0.010	0.2	Spinosyn A	ND	0.007	0.2
Chlorantraniliprole	ND	0.010	0.2	Imidacloprid	ND	0.010	0.4	Spinosyn D	ND	0.002	0.2
Chlorpyrifos	ND	0.010	0.2	Kresoxim-methyl	ND	0.010	0.4	Spiromesifen	ND	0.010	0.2
Clofentezine	ND	0.010	0.2	Malathion A	ND	0.010	0.2	Spirotetramat	ND	0.010	0.2
Cyfluthrin	ND	0.010	1.0	Metaxyl	ND	0.010	0.2	Thiacloprid	ND	0.010	0.2
Dichlorvos	ND	0.010	0.1	Methiocarb	ND	0.010	0.2	Thiamethoxam	ND	0.010	0.2
Daminozide	ND	0.010	1.0	Methomyl	ND	0.010	0.4	Trifloxystrobin	ND	0.010	0.2
Diazinon	ND	0.010	0.2	Myclobutanil	ND	0.010	0.2				

Sample collection methods and the uncertainty of measurement associated with results reported in this certificate are available upon request. Sampled in accordance with PRO.S.106D Sampling NJ. Unless otherwise indicated, results were reviewed and verified by the Lab Director, and issuance of this CoA was authorized by the Lab Director. Action limits except moisture content set according to New Jersey CRC; moisture content 5-15%; water activity <0.65; foreign matter <5% w/w. Results valid only for the exact material sampled and analyzed. Laboratory testing begins within twelve hours of accepted receipt within the laboratory, and stored in a cool, dry place if not analyzed immediately. Moisture Content performed by TM 105, Water Activity performed by TM 106 and Foreign Matter performed by TM 107. Abbreviation Key: ND = Not Detected, LOD = Limit of Detection, LOQ = Limit of Quantitation, ppb = parts per billion, ppm = parts per million, UOM = unit of measure, NEG = Negative, LOD = LOQ/3.

Approved By: *Tetyana Fonarova* 05-Sep-2023

